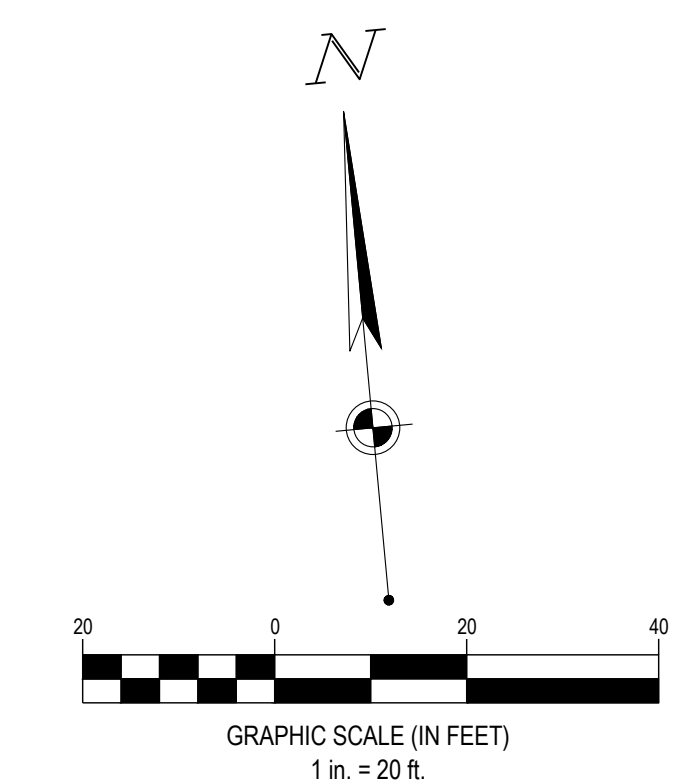


**7 BREW**

**FAIRFIELD TOWNSHIP**  
6565 WINFORD AVENUE  
HAMILTON, OHIO 45011

**SITE LEGEND**

- EXISTING**  
REFER TO C1.3 FOR EXISTING FEATURES LEGEND
- PROPOSED**
- PROPOSED STANDARD DUTY ASPHALT PAVEMENT, SEE DETAIL SHEET C7.0.
  - PROPOSED LIGHT DUTY ASPHALT PAVEMENT, SEE DETAIL SHEET C7.0.
  - PROPOSED CONCRETE DUMPSTER PAD, SEE DETAIL SHEET C7.0.
  - PROPOSED CONCRETE PAVEMENT, SEE DETAIL SHEET C7.0.
  - PROPOSED CONCRETE SIDEWALK
  - RIGHT-OF-WAY
  - PROPERTY LINE
  - SETBACK
  - EASEMENT
  - CENTERLINE
  - BUILDING
  - CONCRETE CURB PAVEMENT/WALK
  - PARKING SPACE COUNT
  - SIGN
  - CATCH BASIN
  - STORM MANHOLE
  - SANITARY MANHOLE
  - CURB INLET
  - CLEANOUT
  - DOWN SPOUT
  - LIGHT POLE



**CODED NOTES:**

1. PROPOSED BUILDING. REFER TO ARCHITECTURAL PLANS FOR DETAILS.
2. PROPOSED TRASH ENCLOSURE PER LOCAL REQUIREMENTS. SEE ARCHITECTURAL PLAN FOR DETAILS, SHEET C7.2.
3. PROPOSED REMOTE COOLER BUILDING. REFER TO ARCHITECTURAL PLANS FOR DETAILS.
4. PROPOSED 6" CONCRETE CURB. REFER TO CONSTRUCTION DETAILS, SHEET C7.0.
5. PROPOSED CONCRETE CURB W/ SIDEWALK. REFER TO CONSTRUCTION DETAILS, SHEET C7.0.
6. PROPOSED CONCRETE SIDEWALK. REFER TO CONSTRUCTION DETAILS, SHEET C7.0.
7. ADA ACCESSIBLE PARKING SPACE WITH SIGNAGE. REFER TO CONSTRUCTION DETAILS, SHEET C7.0.
8. SOLID WHITE TRIPLE ARROW PAVEMENT MARKER. REFER TO CONSTRUCTION DETAILS, SHEET C7.0.
9. PROPOSED CANOPY COLUMN LOCATION. REFER TO ARCHITECTURAL PLANS FOR DETAILS.
10. TRANSITION FROM FLUSH TO FULL-HEIGHT 6" CURB. REFER TO CONSTRUCTION DETAILS, SHEET C7.0.
11. 12" SOLID WHITE STOP BAR WITH 48-INCH TALL "STOP" TEXT PAINTED IN WHITE. REFER TO CONSTRUCTION DETAILS, SHEET C7.0.
12. ALIGN 4" SOLID WHITE CROSS WALK MARKER WITH SLIDING DOOR PANEL AT FRONT OPENING.
13. 4-INCH SOLID WHITE PAVEMENT MARKER, TYPICAL MIDLINES SPACE AT 24" O.C.
14. 48-INCH TALL "LANE # PAINTED IN WHITE.
15. 4-INCH SOLID WHITE PAVEMENTS MARKER FOR PARKING, TYPICAL.
16. 4-INCH SOLID WHITE PAVEMENT MARKER, TYPICAL. MIDLINES SPACE AT 24" O.C.
17. PROPOSED LIGHT POLE. SEE MEP DRAWINGS.
18. 1' WIDTH CONCRETE AROUND REMOTE COOLER BUILDING. REFER TO CONSTRUCTION DETAILS, SHEET C7.1.
19. PROPOSED CURB TAPER. REFER TO CONSTRUCTION DETAILS, SHEET C7.0.
20. PROPOSED STOP SIGN.
21. PROPOSED LOWER SCREEN WALL. REFER TO ARCHITECTURAL PLANS FOR DETAILS.
22. 12" SOLID WHITE STOP BAR WITH 48-INCH TALL "DO NOT ENTER" TEXT PAINTED IN WHITE.
23. PROPOSED MONUMENT SIGN.
24. PROPOSED DOUBLE SIDED, SINGLE PANEL DRIVE-THRU CLEARANCE BAR. REFER TO CONSTRUCTION DETAILS, SHEET C7.3.

**STRIPING PAINT COLORS:**

SUBSTITUTION TO COLORS MUST BE APPROVED BY 7 BREW

PMS 000C	WHITE	PMS 293	BLUE	PMS 202	RED
C: 0%		C: 100%		C: 29.54%	
M: 0%		M: 63%		M: 95.11%	
Y: 0%		Y: 0%		Y: 74.72%	
K: 0%		K: 35%		K: 29.59%	
R: 255		R: 0		R: 138	
G: 255		G: 61		G: 36	
B: 255		B: 165		B: 50	
HEX: FFFFFFFF		HEX: 003DA5		HEX: 8A2432	

**PAINT TYPE:**  
SHERWIN-WILLIAMS PRO PARK, SETFAST, HOTLINE OR AN APPROVED EQUAL.

BENCHMARK		DATUM:
BM "A": CROSS NOTCH IN NORTHEAST SIDE OF FIRST CONCRETE ISLAND AT ENTRANCE OF BRIDGEWATER CHURCH LOCATED APPROXIMATELY 370' NORTH OF CENTERLINE OF PRINCETON RD. AND APPROXIMATELY 475' WEST OF CENTERLINE OF WINFORD AVE. ELEVATION = 763.92		NAVD 88
BM "B": BENCHMARK SET IN EAST SIDE OF POWER POLE. LOCATED APPROXIMATELY 45' NORTH OF CENTERLINE OF PRINCETON RD. AND APPROXIMATELY 560' WEST OF CENTERLINE OF WINFORD AVE. ELEVATION = 761.86		
BM "C": BENCHMARK SET IN NORTH SIDE OF POWER POLE LOCATED APPROXIMATELY 50' SOUTH OF CENTERLINE OF PRINCETON RD. AND APPROXIMATELY 311' WEST OF CENTERLINE OF WINFORD AVE. ELEVATION = 758.87		

FORTY-EIGHT (48) HOURS BEFORE DIGGING IS TO COMMENCE, THE CONTRACTORS SHALL NOTIFY THE FOLLOWING AGENCIES: OHIO UTILITIES PROTECTION SERVICE AT 811 OR 800-362-2764 AND ALL OTHER AGENCIES WHICH MIGHT HAVE UNDERGROUND UTILITIES INVOLVING THIS PROJECT AND ARE NONMEMBERS OF STATE UTILITIES PROTECTION SERVICE



Revisions / Submissions		
ID	Description	Date

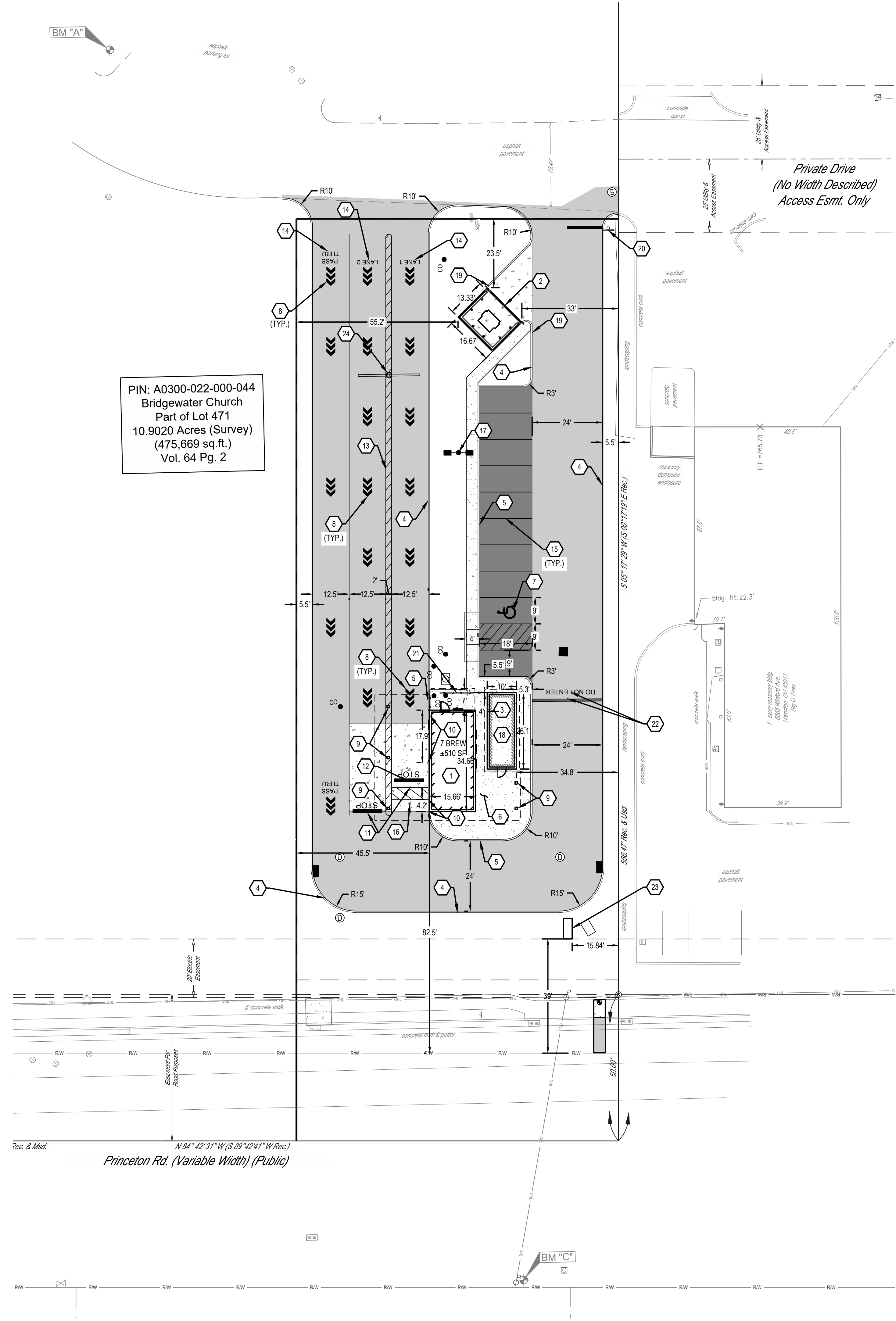
© 2026 CESO, INC.

Project Number: 767917  
 Drawn By: NMM  
 Checked By: JMS  
 Date: 04/16/2026  
 Issue: FOR PERMIT

Drawing Title:  
**SITE PLAN**

**C3.0**

PIN: A0300-022-000-044  
 Bridgewater Church  
 Part of Lot 471  
 10.9020 Acres (Survey)  
 (475,669 sq.ft.)  
 Vol. 64 Pg. 2



C:\DCA\CCD\ces\CESO7-Brew Hamilton OH - Winford\Project Files\CESO03-CIVIL\PLAN\LOT767917 SITE PLAN.dwg - 4/15/2026 - Reed Hemelgarn